

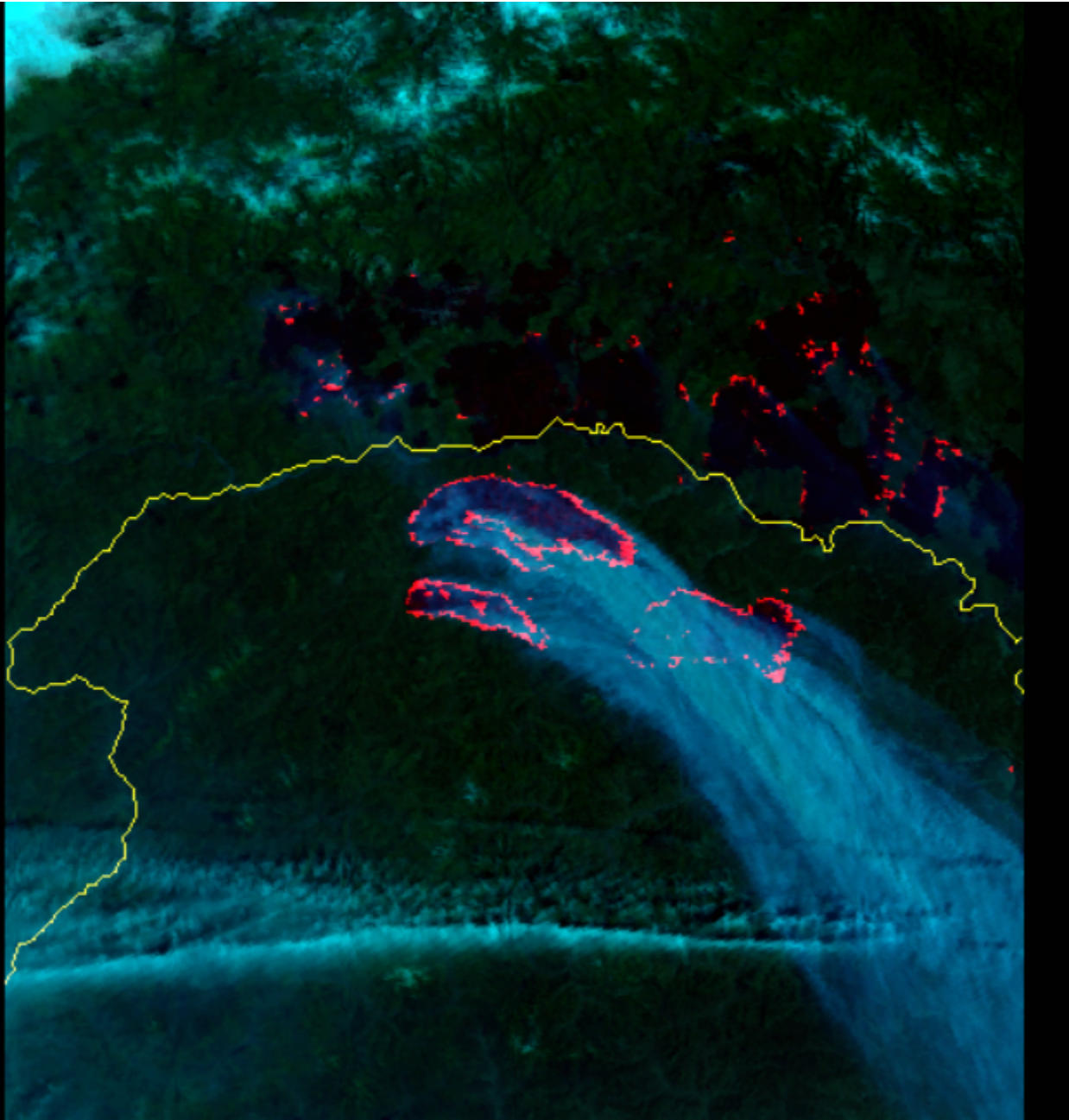
Real time data distribution helped promotion of applications

Xu Jianmin

NSMC/CMA

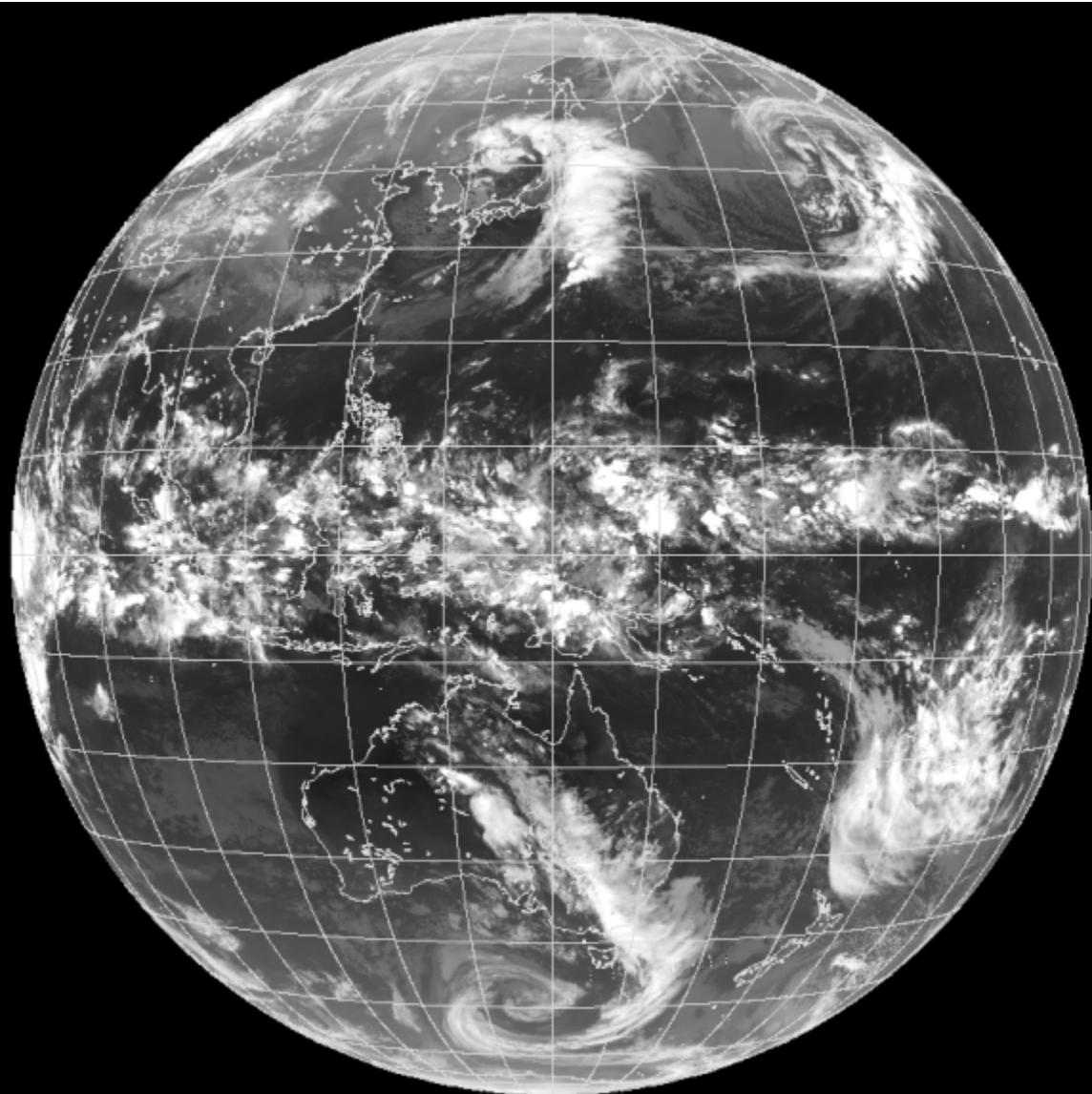
7 Nov., 2012

7 May, 1987, China experienced a severe forest fire

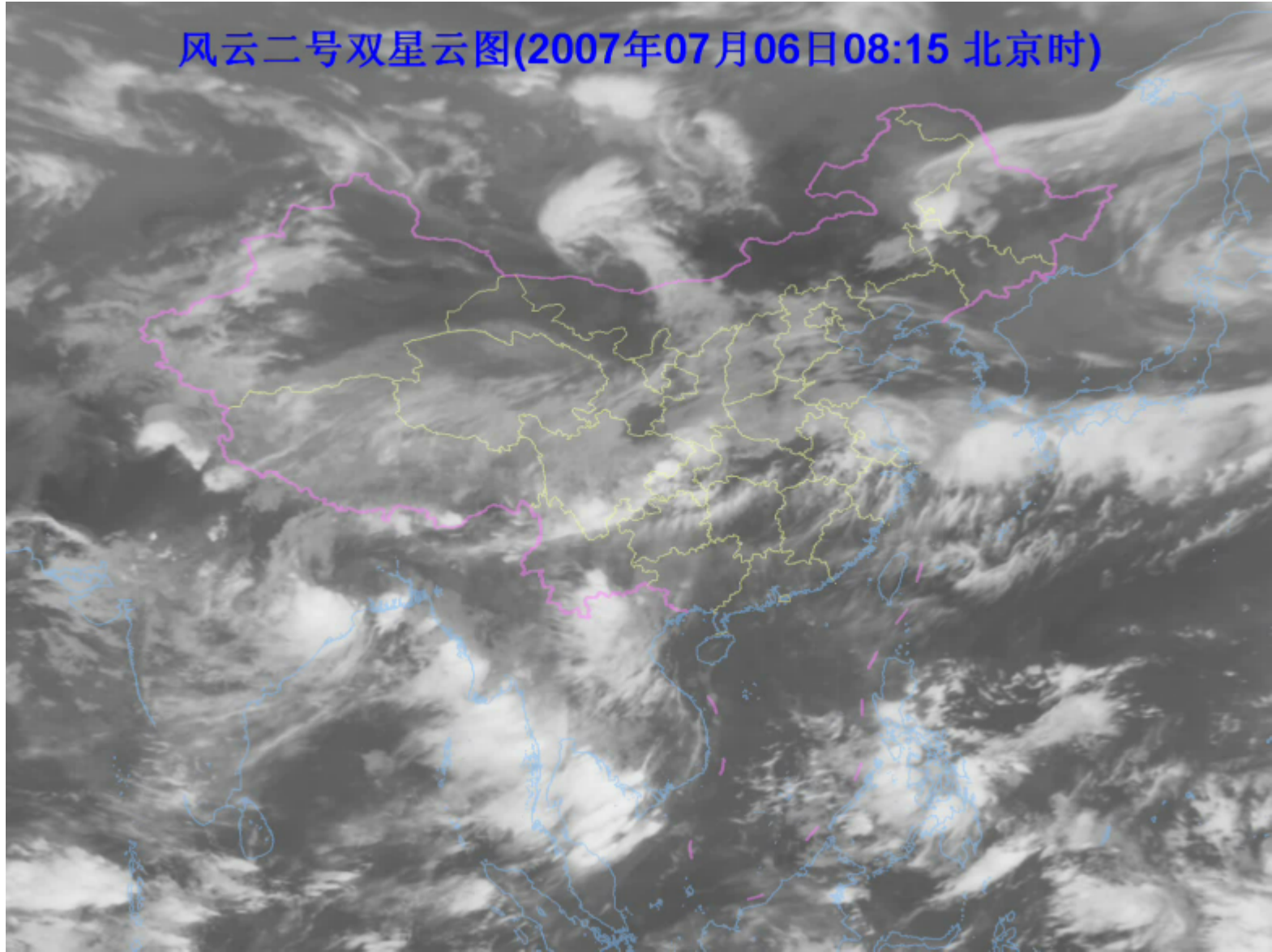


The area burned out was about 1/13 of the whole forest in China, or 1/800 of the Chinese tertiary. NOAA HRPT data was used at monitoring the fire process and took important action in putting down the fire.

From 1978 to 2002, GMS data was used in China for weather forecasting and hazard prevention



When FY satellite data was operational,
CMA immediately distributes FY data



CGMS has made every effort at improving level on data shearing and utilization, the achievement is significant

- In the future, NSMC/CMA will co-operate with the international colleagues, make our effort at improving quality of FY satellite products.
- CGMS's final objective is to benefit the whole world.