

Forecast Sensitivity - Observation Impact (FSOI) Inter-comparison Experiment

Rolf Langland, Naval Research Laboratory (NRL)

Tom Auligné, Joint Center for Satellite Data Assimilation (JCSDA)

Ron Gelaro, NASA, Global Modeling and Assimilation Office (GMAO)

Rahul Mahajan, David Groff, NOAA, National Weather Service (NWS)

Jianjun Liu, NOAA's Satellite and Information Service (NESDIS)

James Cotton, Larry Morgan, UK Met Office

Yoichiro Ota, Japan Meteorological Agency (JMA)



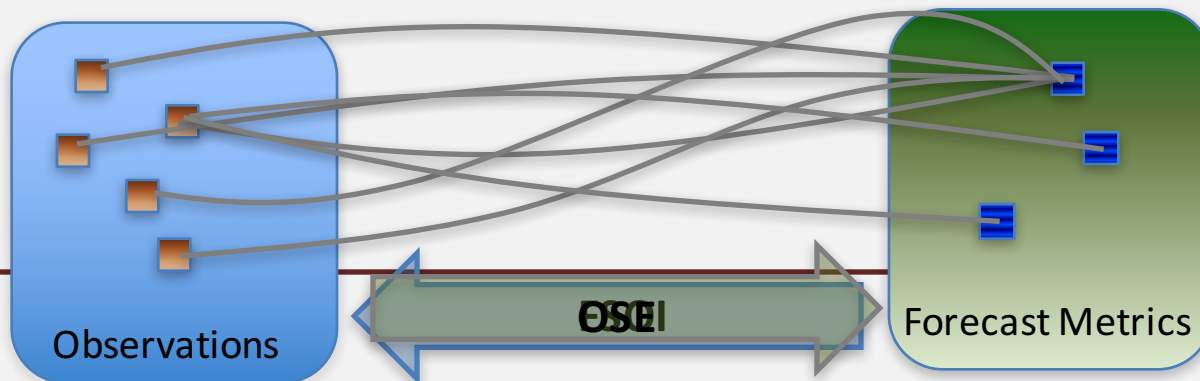
FSOI Comparison Study Motivation

- Several NWP centers compute FSOI routinely to monitor/understand/tune their DA system. Opportunity to compare impacts in systems with different DA methods and different mix of assimilated observations.
- Impact of AMVs and other wind observation data.
- Satellite vs. in-situ data, TLM/ADJ vs ensemble DA.
- Are relative impact of various observation types comparable?
- Can we learn from similarities/differences to improve NWP systems and DA procedures?

- NWP Centers that participated: NRL, GMAO, EMC, Met Office, JMA

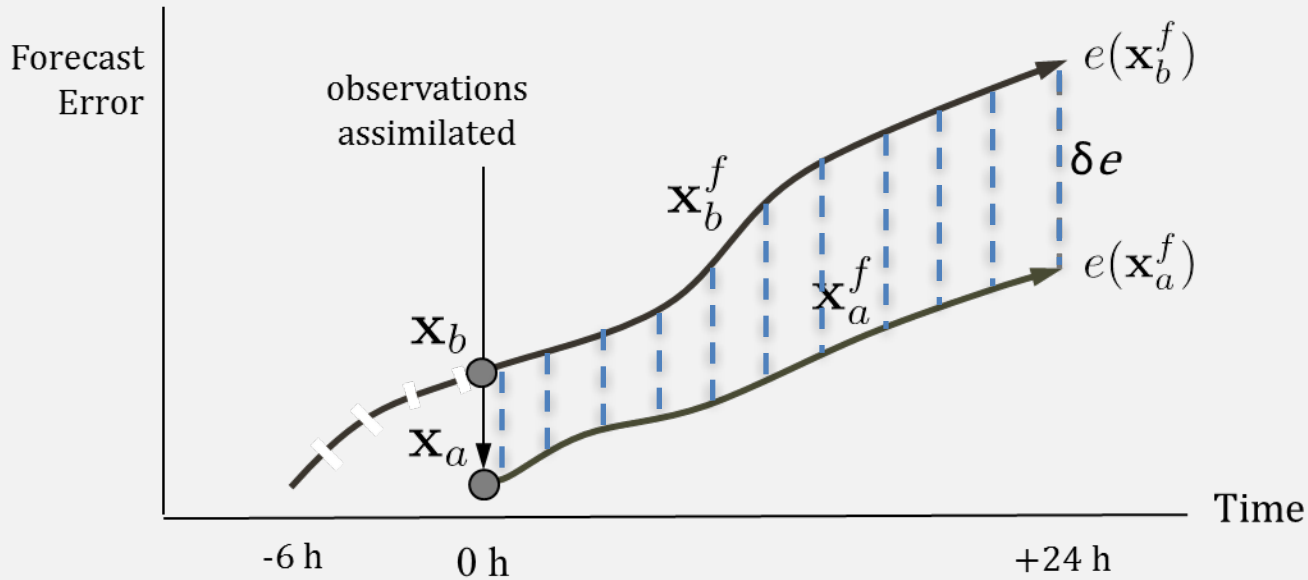
FSOI vs. data-denial (OSE) experiments

- FSOI quantifies impact of all assimilated observations on a selected forecast metric ... shows if any observation [or set of observations] decreases or increases forecast error ...
- OSE shows impact of one selected change to the observation system on all aspects of forecast ... not able to partition impact of various observation types



Forecast Sensitivity – Observation Impact (FSOI)

Langland and Baker (Tellus, 2004)



NAVGEM ADJOINT NAVGEM ADJOINT

Adjoint-derived (single outer-loop) observation impact

$$\delta e \approx d^T K^T [M_b^T e(x_b^f) + M_a^T e(x_a^f)]$$

Innovation vector

Ensemble-derived observation impact

$$\delta e \approx d^T R^{-1} L(HX_a^0) X_a^{fT} [e(x_b^f) + e(x_a^f)]$$

Experimental Design

- **Time period:** 3-month DJF 2014-15, 00UTC & 06UTC analysis times
- **Verification:** 24h forecast against self-analysis
- **Metric:** global total dry energy (surface-100hPa)
- **Adjoint:** dry plus moist physics, as available
- **Ensemble:** flow-following localization

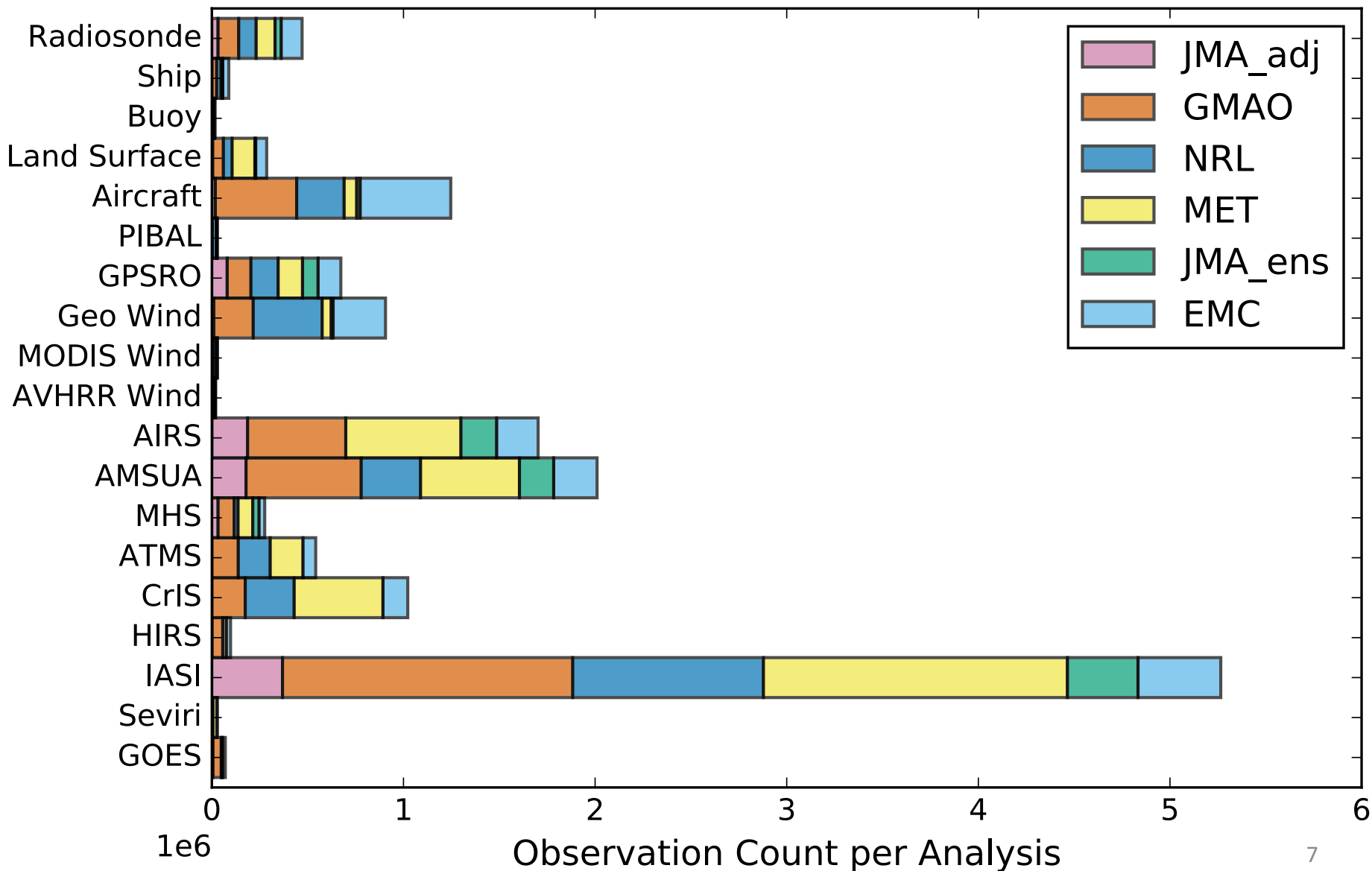
Results shown here are preliminary

[only global summary plots of impact at 00UTC will be shown]

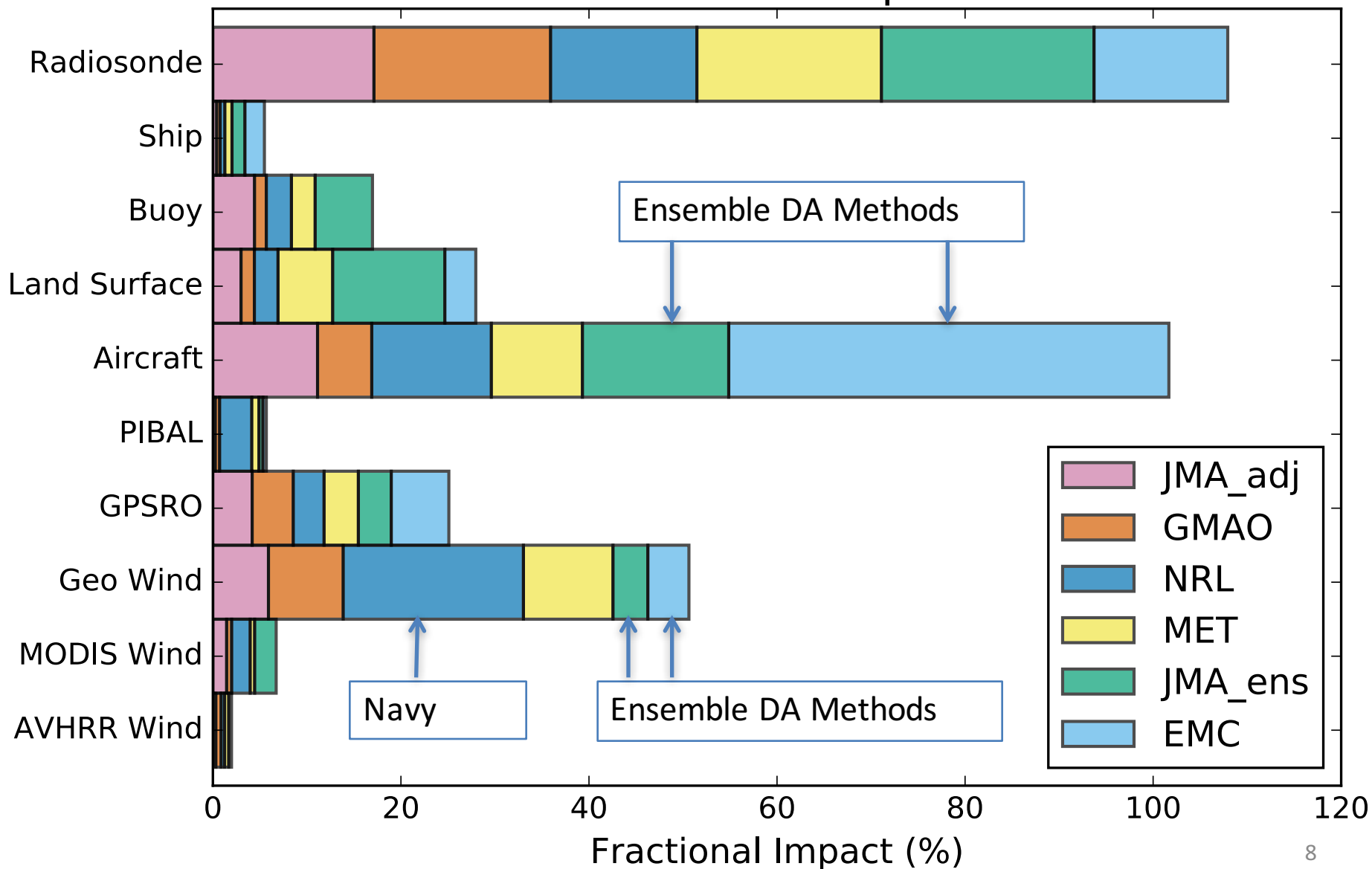
Participating NWP Centers

NWP Centers	NRL	GMAO	Met Office	JMA Adjoint	JMA Ensemble	EMC
Analysis System	4DVar In Observation Space	Hybrid 3DVar	4DVar	4DVar	LETKF re-centered via 4DVar	EnKF re-centered via 4DEnVar
FSOI Technique	Adjoint	Adjoint	Adjoint	Adjoint	Ensemble	Ensemble
Experiment Resolution	Model: T425L60 Adjoint: T119L60	Model: 25km DA: 50km Ens: 100km	Model: N320 (40km) Adjoint: N216 (60km)	Model: TL959L100 Adjoint: TL319L100	Ensemble: (x50) TL319L100	Ensemble: (x80) T254
Specific Considerations	Super-obbing for AMVs	QC = channel selection + dynamical observation error	~30% cycles discarded due to spurious impacts			Additional thinning of observations except for aircraft data

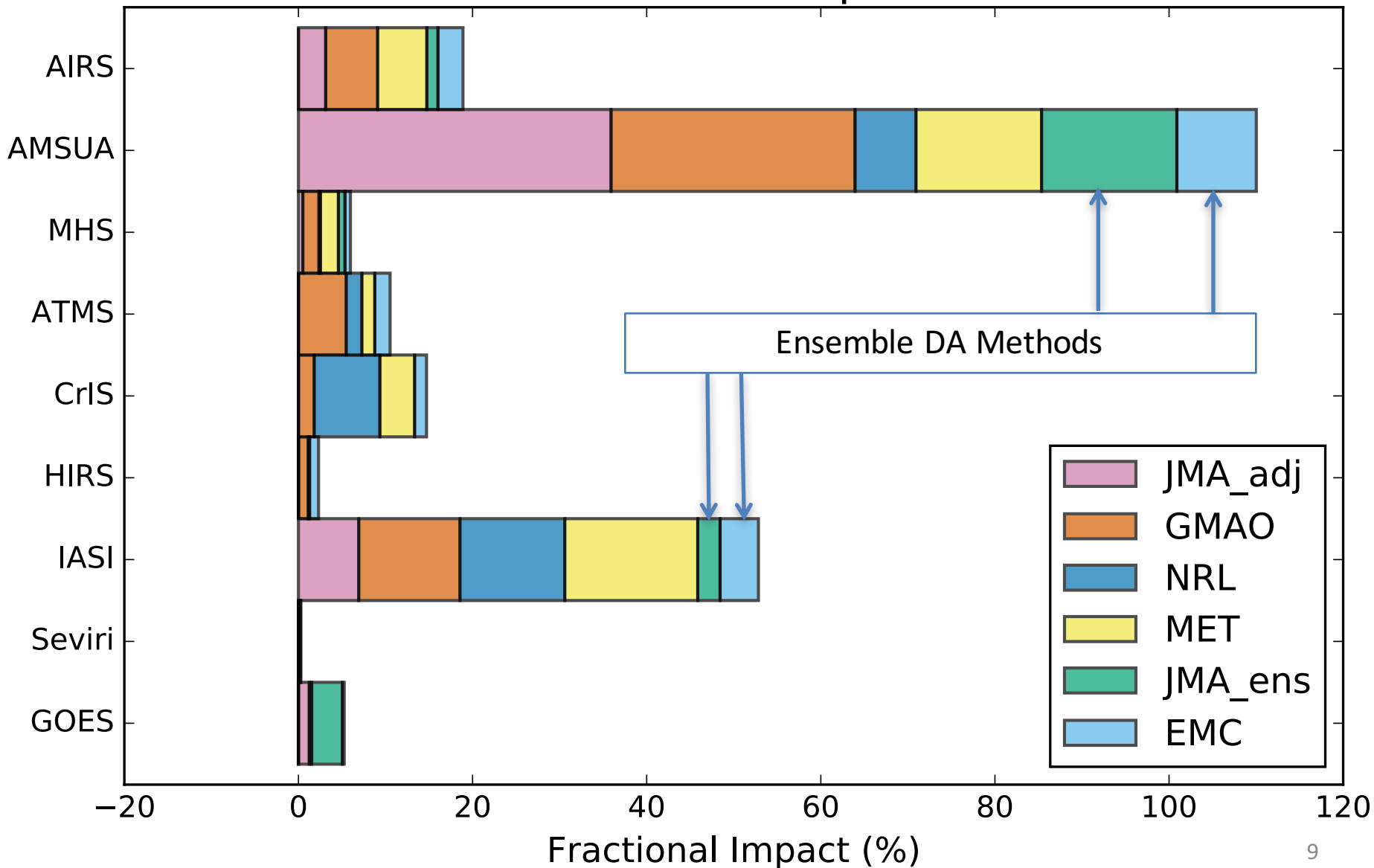
Observation Count at 00UTC



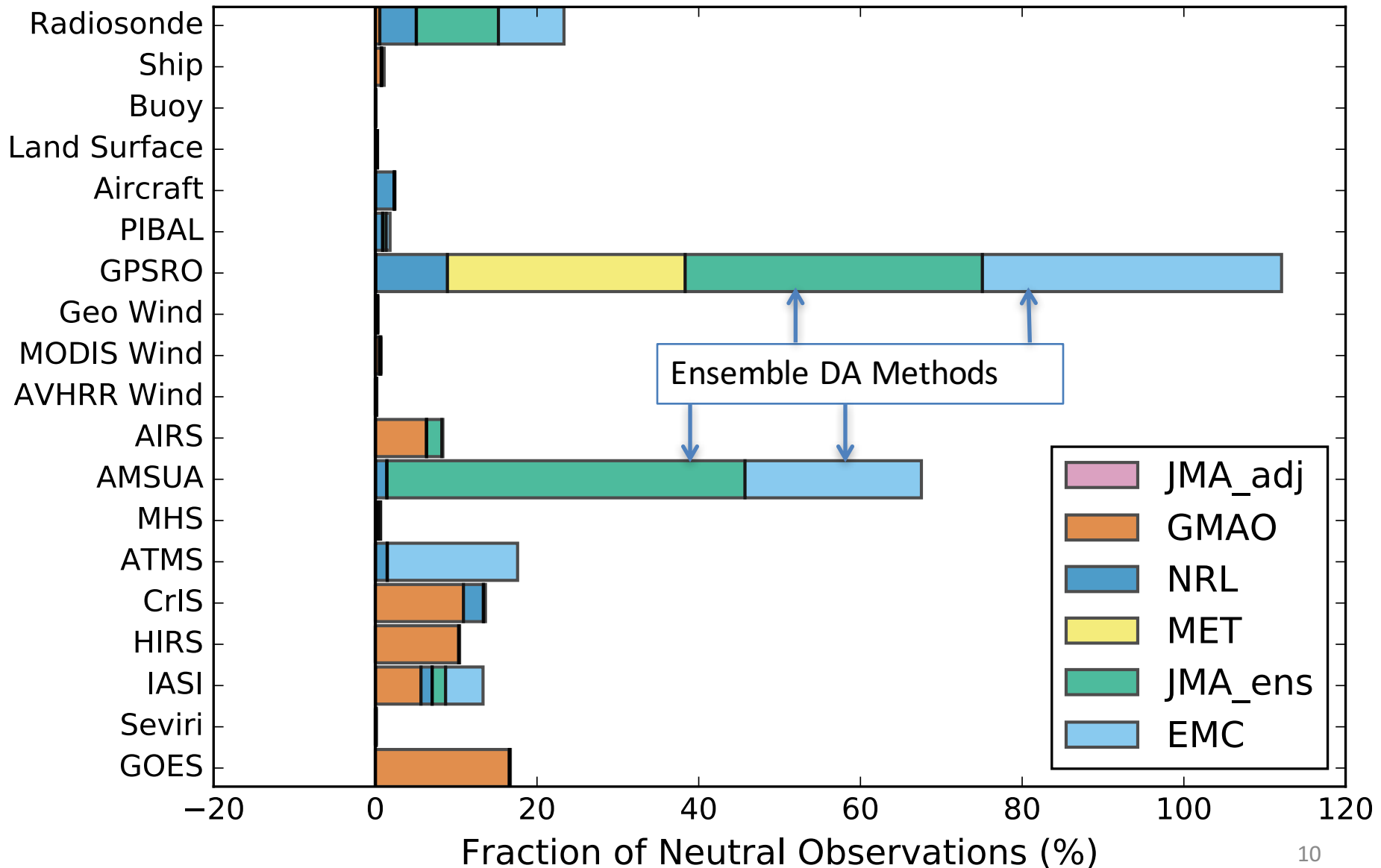
Fractional Ob-Impact



Fractional Ob Impact: Satellite Radiances



Fraction of Neutral Impact-Observations



FSOI Inter-comparison Summary

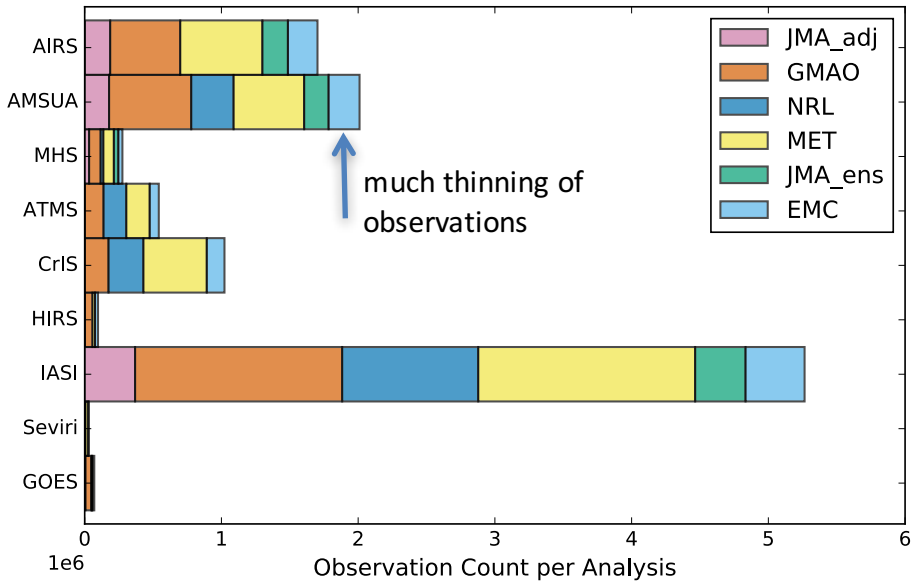
- Largest AMV impacts in Navy Global system
- Smallest AMV impacts in EMC & JMA ensemble-DA systems
- Impacts depend on amount of AMV and other observation data that is assimilated
- Thinning or super-ob procedures
- Assimilation method: TLM/ADJ vs. ensemble
- Ensemble methods appear less-accurate at quantifying sensitivity for observations with small individual impacts (e.g., satellite obs) ...

Questions about the FSOI inter-comparison study?



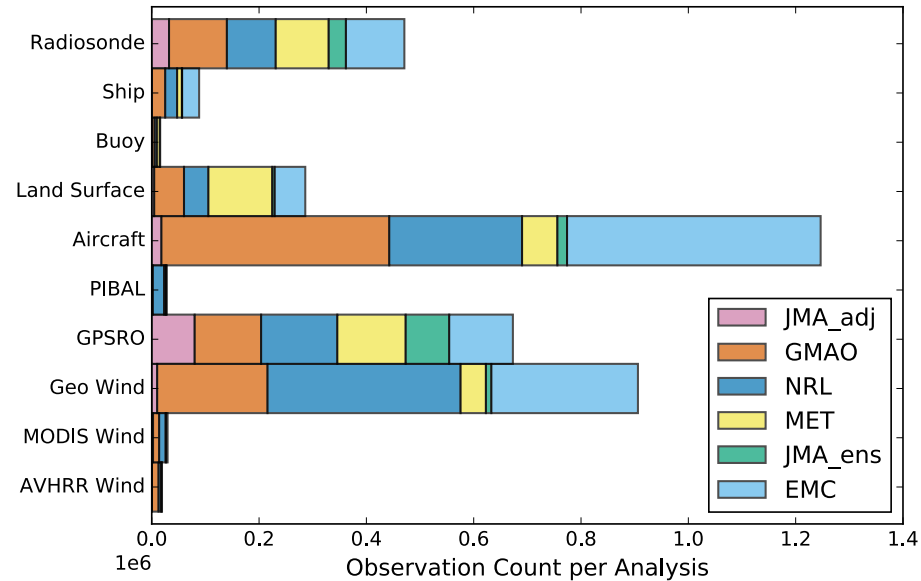
Observation Impact at 00UTC: **Observation Count**

24-h Observation Impact Summary
Global Domain, 00Z DJF 2014-15
Observation Count



Radiances

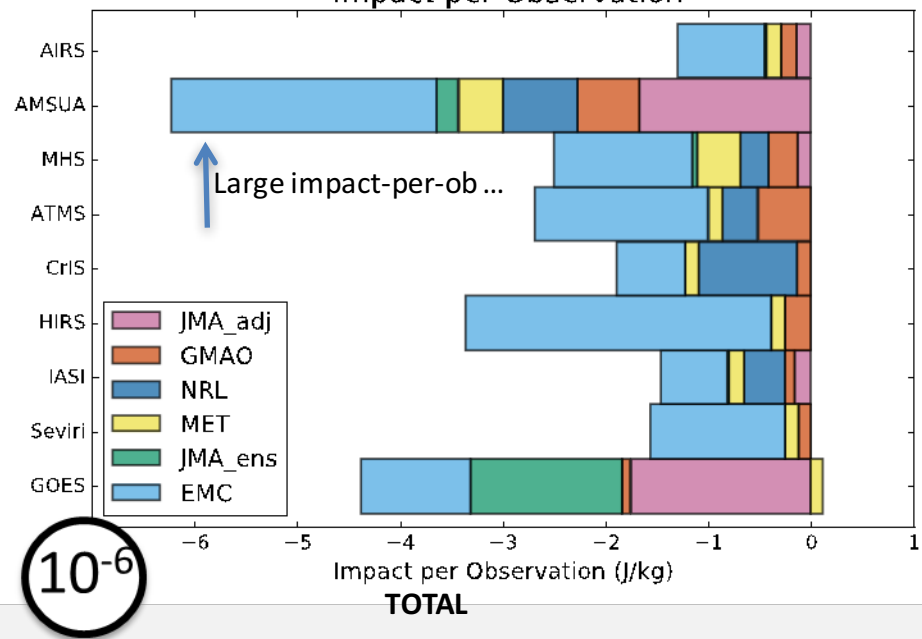
24-h Observation Impact Summary
Global Domain, 00Z DJF 2014-15
Observation Count



Other Observations

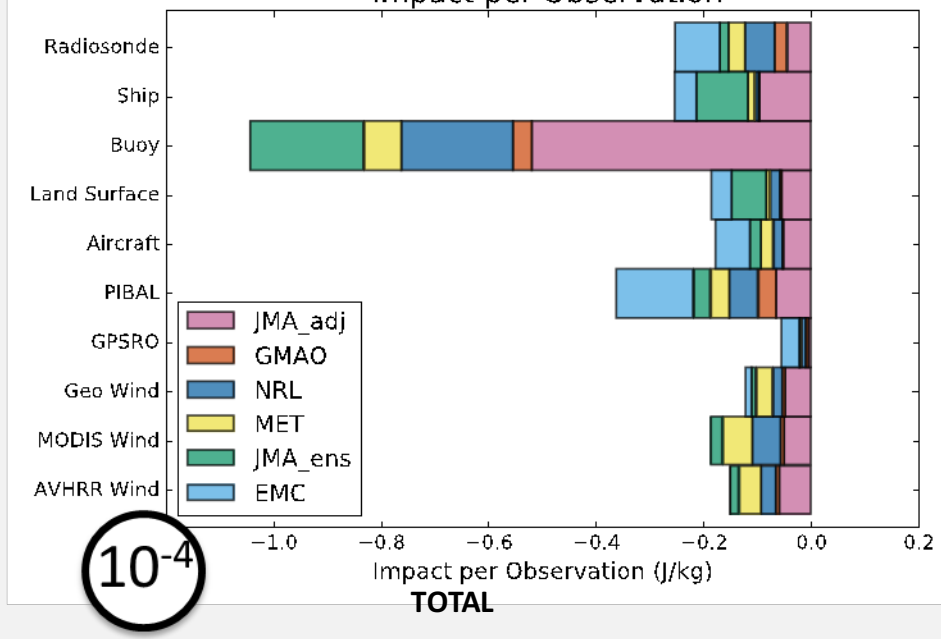
Observation Impact at 00UTC: **Impact per Observation**

24-h Observation Impact Summary
Global Domain, 00Z DJF 2014-15
Impact per Observation



Radiances

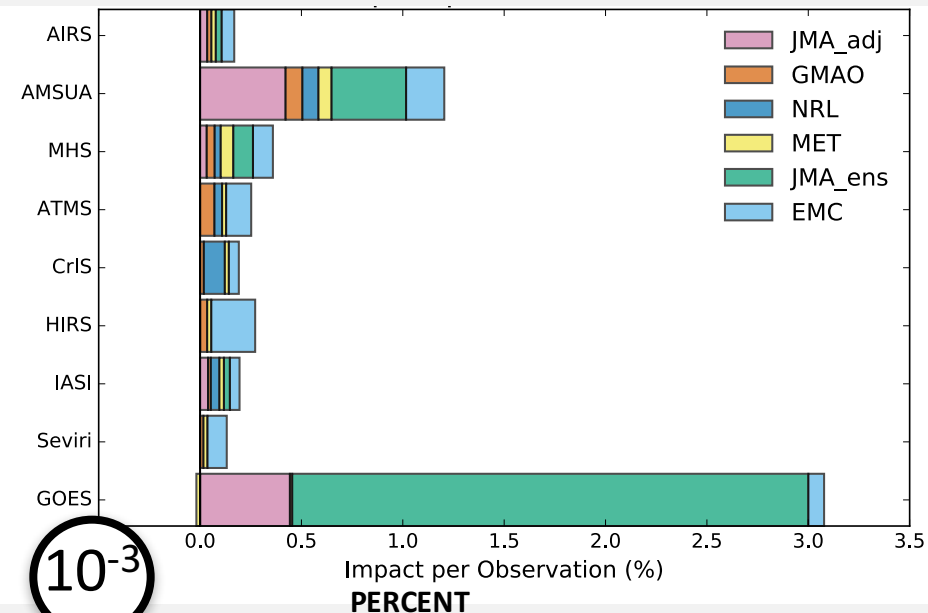
24-h Observation Impact Summary
Global Domain, 00Z DJF 2014-15
Impact per Observation



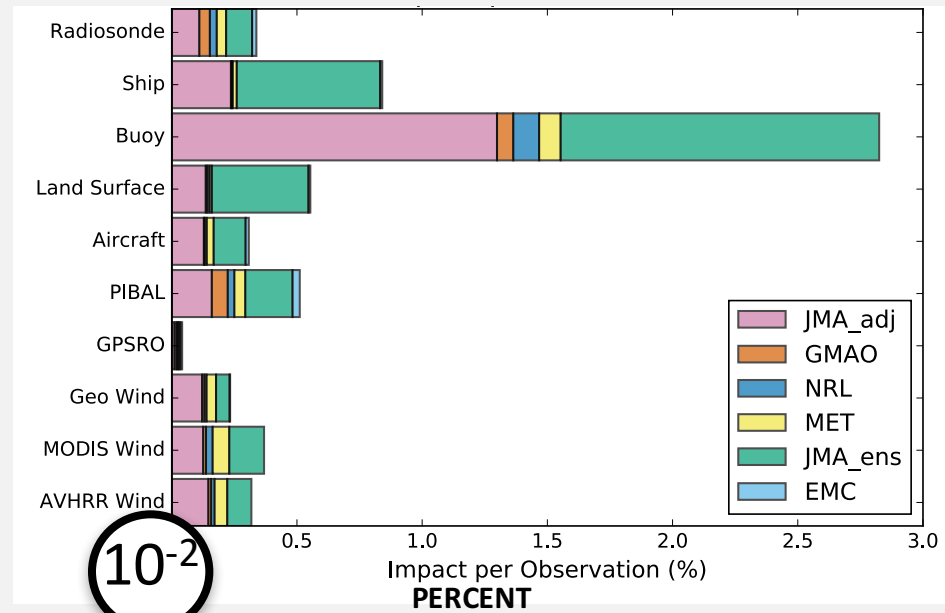
Other Observations

Observation Impact at 00UTC: **Impact per Observation**

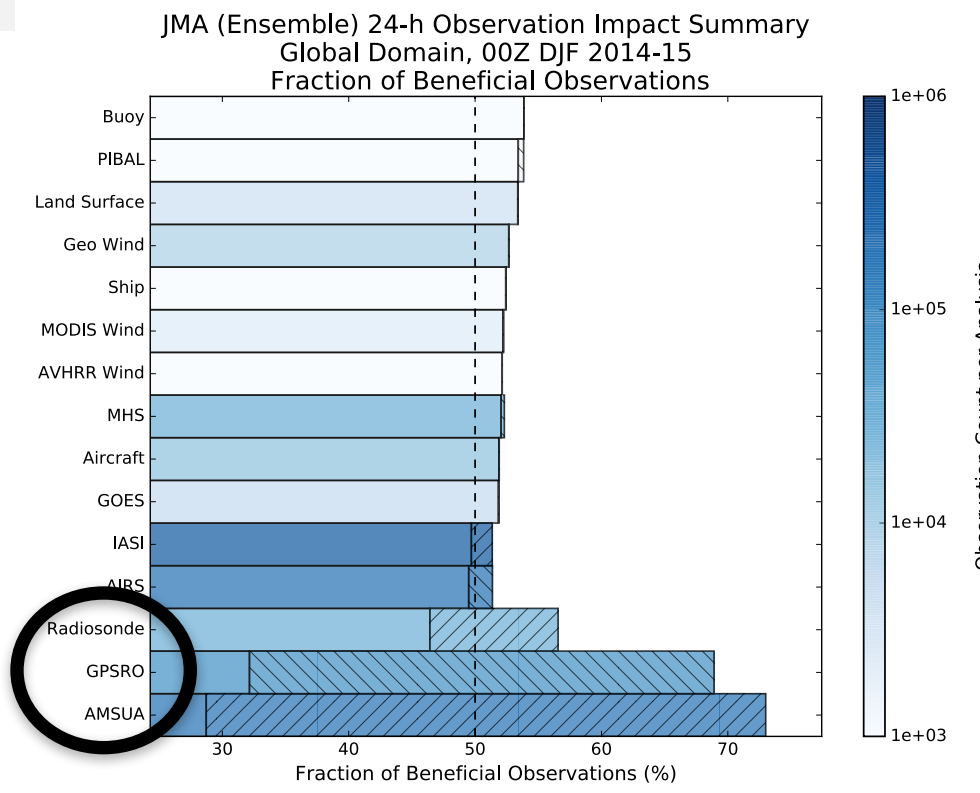
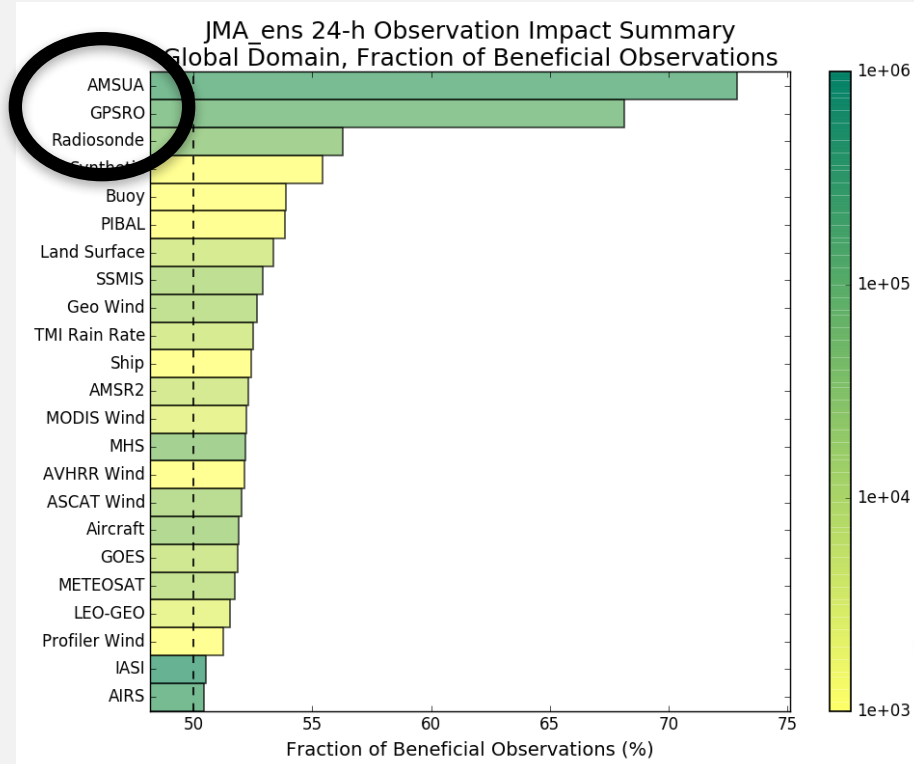
Radiances



Other Observations



Observation Impact at 00UTC: Fraction of Beneficial Observations



FSOI TLM/ADJ vs. Ensemble methods

Only ~20% of the forecast error metric projects onto ensemble structures, so observation sensitivity may be not well-represented with ensemble methods [Problems with ensemble localization, inflation factors and other issues]. Implications for FSOI with ensemble methods, and also for ensemble DA itself, such as 4dENS-Var, as opposed to 4DVAR with TLM/ADJ.

Observation impact with ensemble method is artificially changed by ensemble “inflation factors.”